



12 VIVIAN PARK

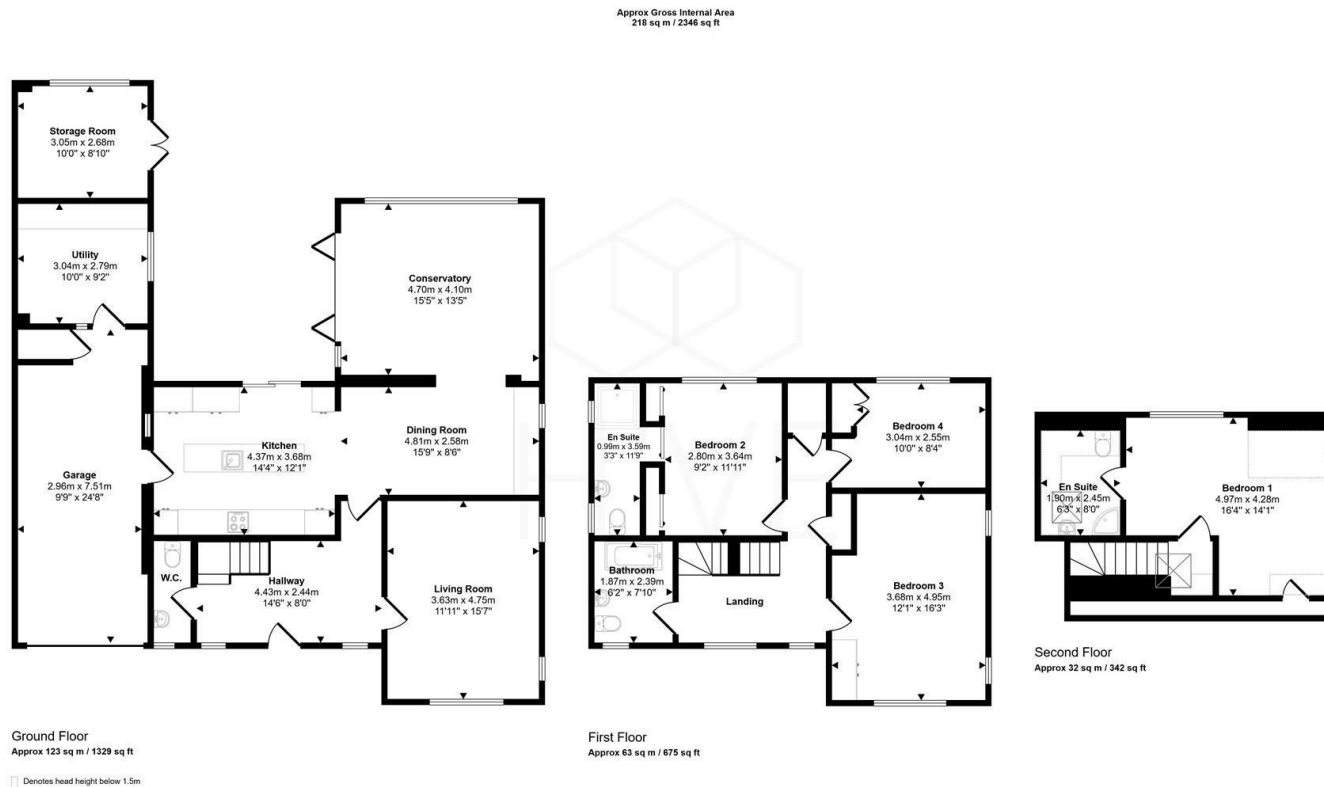
SWANAGE, BH19 1PJ

£1,025,000
FREEHOLD

** Four Spacious Bedrooms ** Three Modern Bathrooms ** Separate Ground Floor WC ** Two Living Areas
 ** Year-Round Conservatory ** Contemporary Kitchen ** Large Tandem Garage and Utility Room ** Sea
 Views ** Versatile Layout ** Prime Location ** Ample Off-Road Parking **



HIVE



| Energy Efficiency Rating | | |
|---|----------------------------|-----------|
| | Current | Potential |
| Very energy efficient - lower running costs | | |
| (92 plus) A | | |
| (81-91) B | | |
| (69-80) C | | |
| (55-68) D | | |
| (39-54) E | | |
| (21-38) F | | |
| (1-20) G | | |
| Not energy efficient - higher running costs | | |
| England & Wales | EU Directive 2002/91/EC | |

Agents Note: Whilst every care has been taken to prepare these particulars, they are for guidance purposes only. All measurements are approximate and are for general guidance purposes only and whilst every care has been taken to ensure their accuracy, they should not be relied upon and potential buyers/tenants are advised to recheck the measurements

Hive & Partners
Unit F1
Arena Business Centre 9
Nimrod Way
Ferndown
BH21 7UH

01202 122 002
sales@hiveandpartners.co.uk
<https://www.hiveandpartners.co.uk/>



HIVE